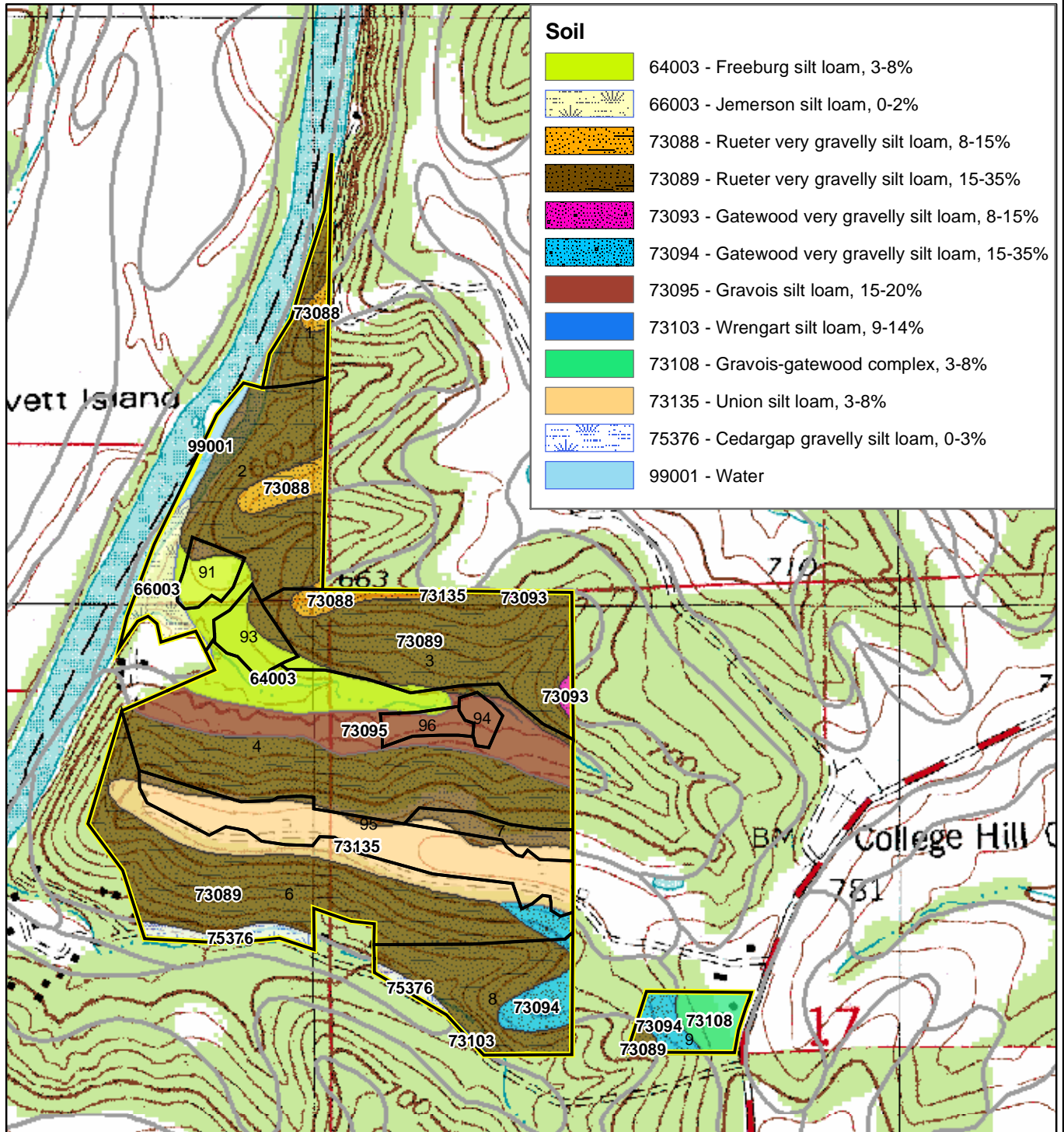
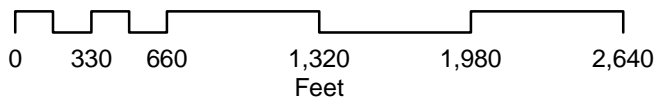


Figure 9 - Tony Hayden Property - Soils Map
Part Sections 7, 17, 18, T42N, R7W
Osage County, MO



Map Data Source: Osage County Soils
 Natural Resources Conservation Service
 Available from the Missouri Spatial Data Information Service
<http://msdisweb.missouri>



N

 C. E. Hauser
 Midwest Forest Consultants, LLC
 04/2006