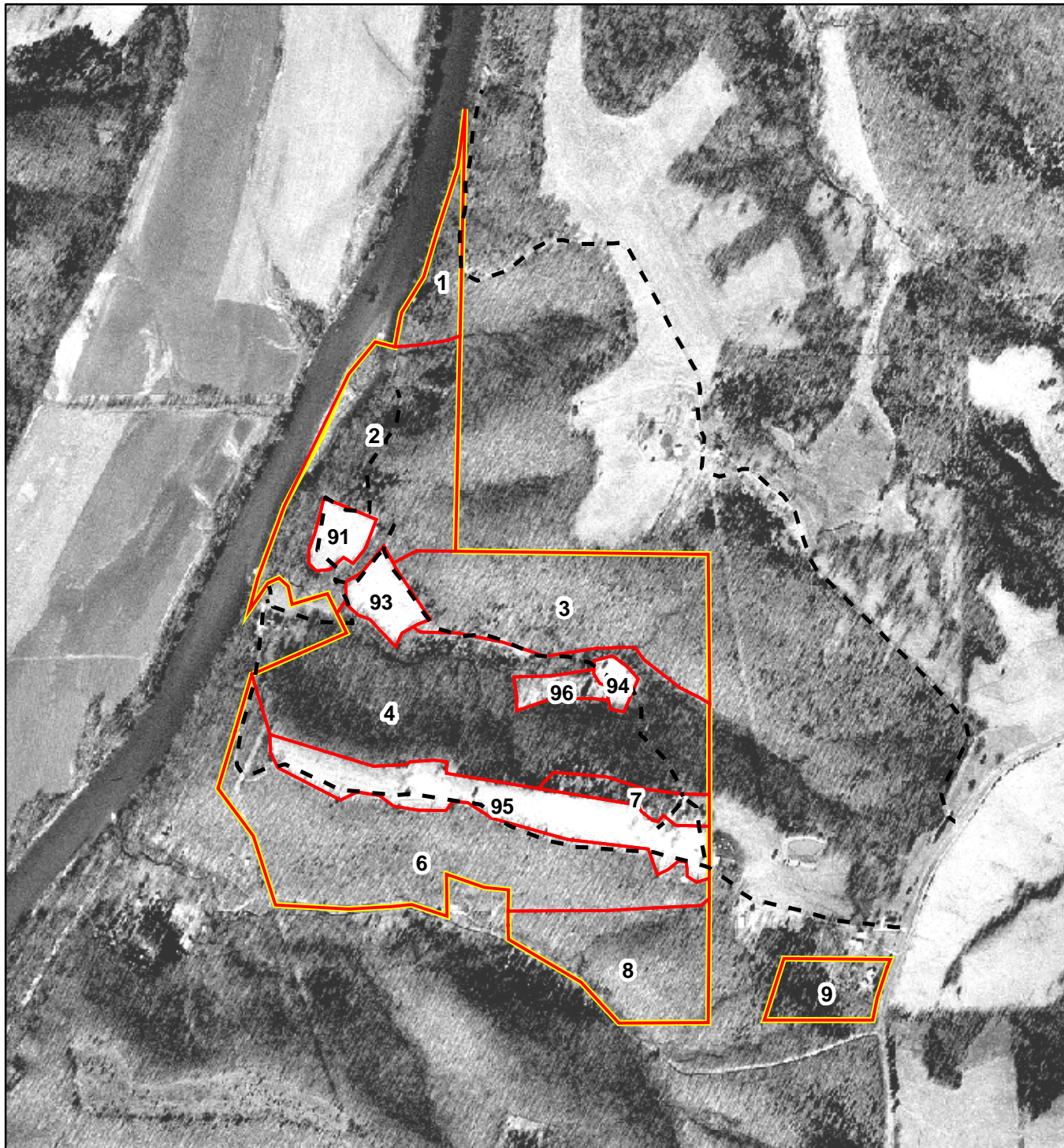


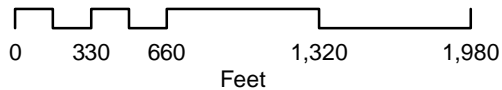
**Figure 6 - Tony Hayden Property - Aerial Map**  
**Part Sections 7, 17, 18, T42N, R7W**  
**Osage County, MO**



**Legend**

- - - Trails
- Stands
- Boundary

Map Data Source: Cooper Hill Digital Orthophoto Quad  
 Aerial Photography taken February 17, 1995  
 Available from the Missouri Spatial Data Information Service  
<http://msdisweb.missouri>.



C. E. Hauser  
 Midwest Forest Consultants, LLC  
 04/2006