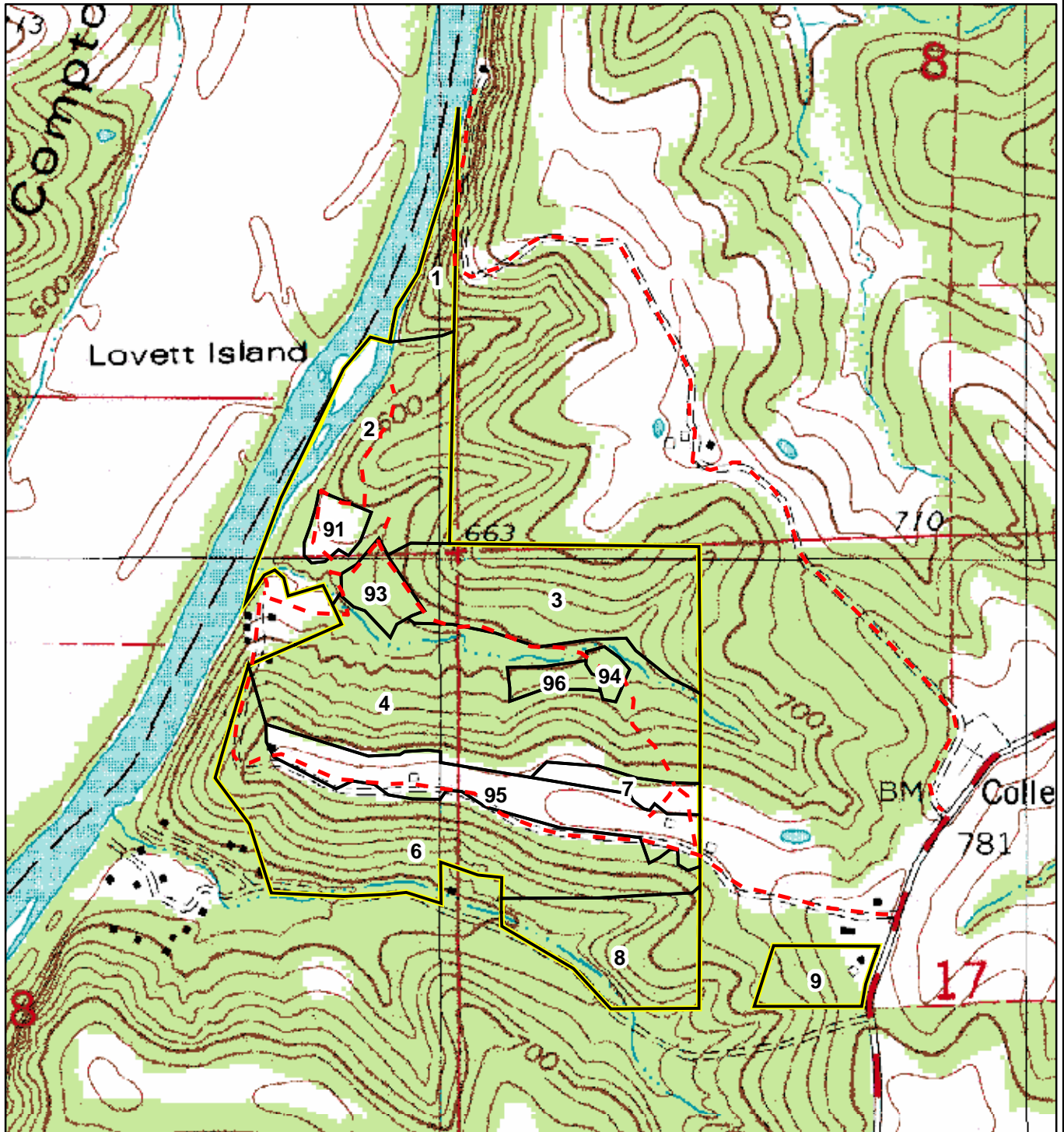


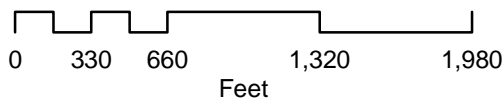
Figure 5 - Tony Hayden Property - Stand Map
Part Sections 7, 17, 18, T42N, R7W
Osage County, MO



Legend

- - - Trails
- Stands
- Boundary

Map Data Source: Cooper Hill 1:24,000 Topo Quad
 Available from the Missouri Spatial Data Information Service
<http://msdisweb.missouri>.



C. E. Hauser
 Midwest Forest Consultants, LLC
 04/2006